

# Simline 6

basic & primary rate ISDN network simulator

**Simline 6** is a compact, versatile ISDN network simulator with 6 basic rate ports and one optional E1 primary rate port.

## Training

Run practical sessions during router, video-conferencing or ISDN training courses.

## Compact

Simulate 6 independent BRI lines and 1 optional E1 PRI line on your desktop.

## Demonstration

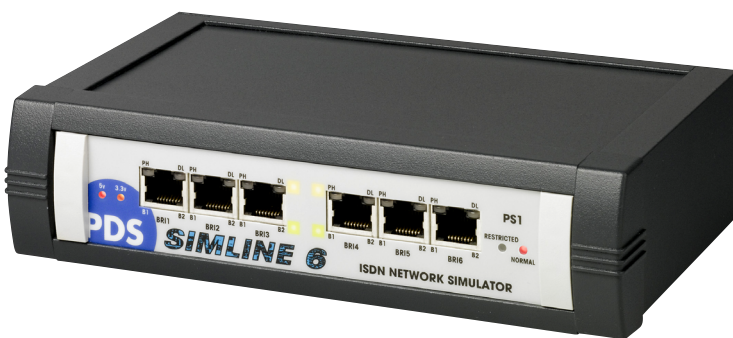
Enables confident presentation during exhibitions and customer demonstrations.

## Test

Provides perfect line simulation to evaluate products working at their best.

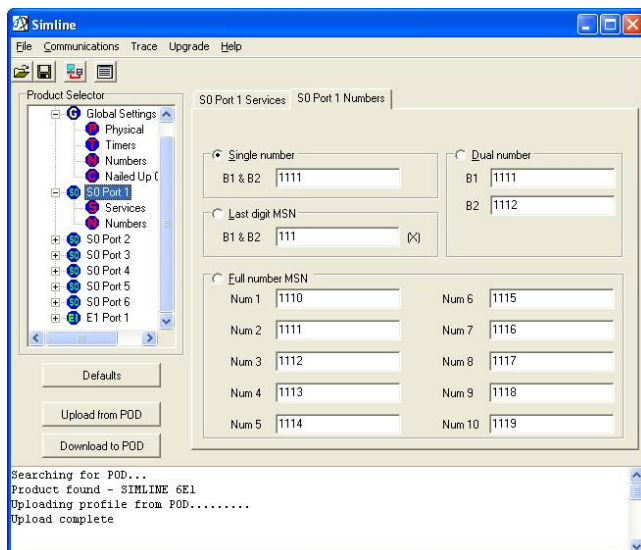
## Development

Simulate ISDN, fast deactivation and supplementary service provision with full D channel protocol analysis.



The **Simline 6** is a high quality, compact ISDN network simulator with six basic rate S/T ports and one optional primary rate E1 port. All of these lines are simulated in one portable unit measuring just 50mm x 200mm x 130mm. Any port may call any other port using simple default telephone numbers or any user defined numbers.

Full protocol analysis is provided for development and test purposes together with simulation of special basic rate functions such as fast deactivation, clearing cause selection, supplementary service provision and leased lines (nailed up B channels).



Each **Simline 6** is pre-configured for plug-and-play simplicity. Intuitive Windows software supplied, allows you to modify the configuration to suit your application. Once configured, changes can be saved to the **Simline 6** which may then be disconnected from the PC host and used independently.

LED's clearly indicate the status and B Channel activity on each port as well as layer 2 activation and presence of PS1 on the basic rate ports.

The optional E1 primary rate port supports a range of 1000 DDI numbers and allows calls to be routed to any selected channel on the E1 port.

## Simple Configuration

The unit connects to any suitable PC host via a standard serial port and the intuitive Windows user interface allows simple configuration.

### Features Common to all Interfaces

- User definable telephone numbers.
- Supplementary services such as called/calling line ID presentation, called/calling party subaddress presentation and high/low layer compatibility presentation.
- Generation of any required Clearing Cause values to test terminal responses.
- Loopback mode to test one terminal in isolation.

### BRI Features

- Supports 2 x 64Kbit/s B channels per port.
- Numbering mode (single number, dual number or MSN).
- Leased line operation allowing the path between B channels to be fixed.
- Configure timer values for dropping layer 2 and layer 1 at the end of a call to allow accurate emulation of different European networks.

### PRI Features

- Supports 30 x 64Kbit/s B channels.
- Calls may be routed from the optional E1 port using any selected channel.
- A range of 1000 DDI numbers may be dialled.

## Protocol Analysis

The powerful protocol trace function is a useful tool for product test and development applications. All D channel protocol messages transmitted and received are displayed with user selectable port, layer and message filters. The analysis is displayed on your PC host and may be optionally saved to disk as a text file for later review.

## Specification

### Switch Type Supported

ETSI Euro-ISDN

### Interface Types

Basic rate ports: S/T interface

Primary rate port (option): E1 interface

### Rear Panel Ports

Power - 8 pin mini DIN

Serial port - 9 way D type

Primary Rate - E1 RJ45 (option)

### LED Indicators

B1 / B2 Channel Active

PS1 Normal

PH (Physical Layer - Layer 1) Active

DL (Datalink Layer - Layer 2) active

### Configuration Interface

Serial Port - 9 way D type

### PC Operating System

Windows 95/98/NT4/2000/XP (PC only required for configuration)

### PS1 (Power Source 1)

Supplied as Normal (Restricted is a factory option on BRI)

### Power Supply

External universal power adapter with IEC connector

### Size/Weight

50mm x 200mm x 130mm, (8" x 2½" x 5¼")

900g, (1lb, 10oz)

### Operating/Storage Temperature

0 - 40° C

### Relative Humidity

90% non-condensing

*Specifications subject to change without prior notice. Issue 2.0*

©Packet Data Systems Ltd 2007.

*Windows is a registered trade mark of Microsoft Corporation.*



### Distributed by: