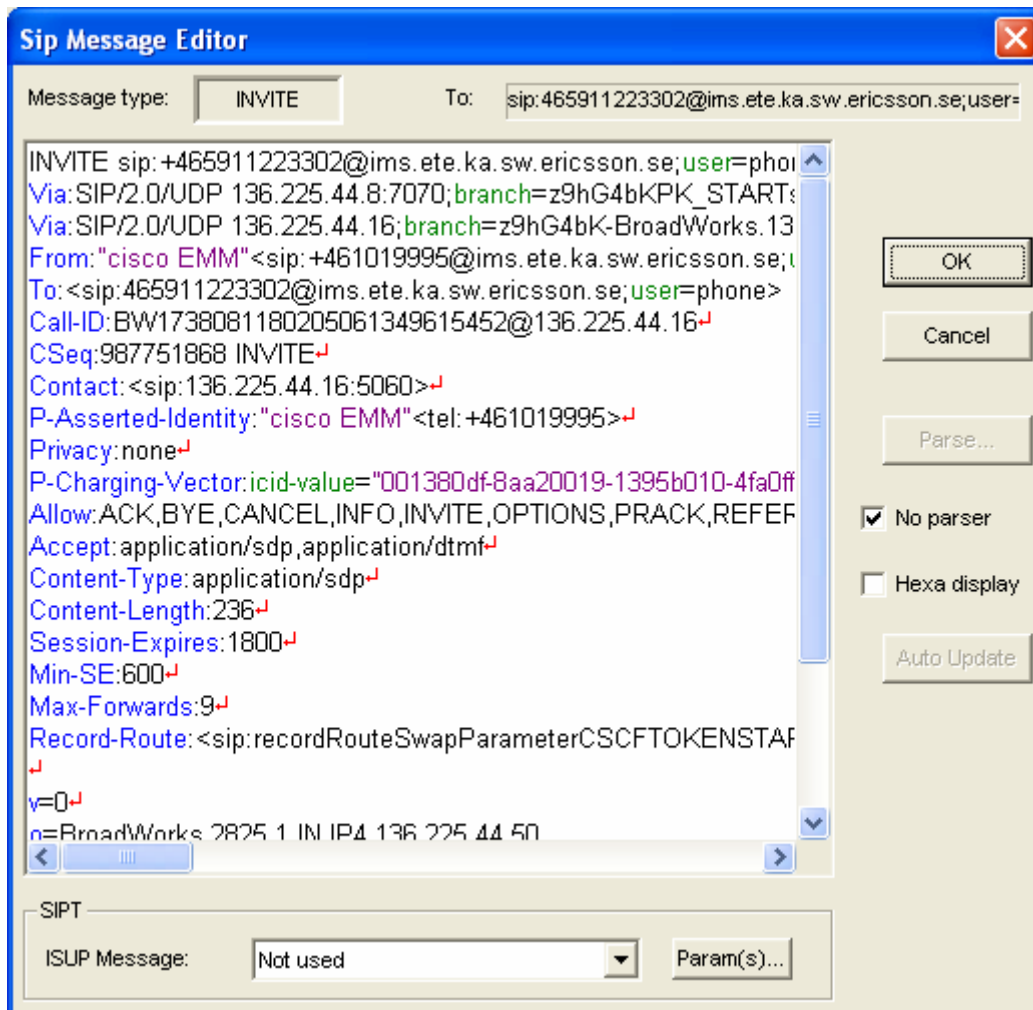


Send an INVITE without Parsing Message

Imagine you want to reproduce the problem caused by the INVITE message in file "with_plus_eth.dat"

- 1) simply open the file with a text editor and copy to clipboard
- 2) open an IP profile and paste the content of the message in to the INVITE buffer:

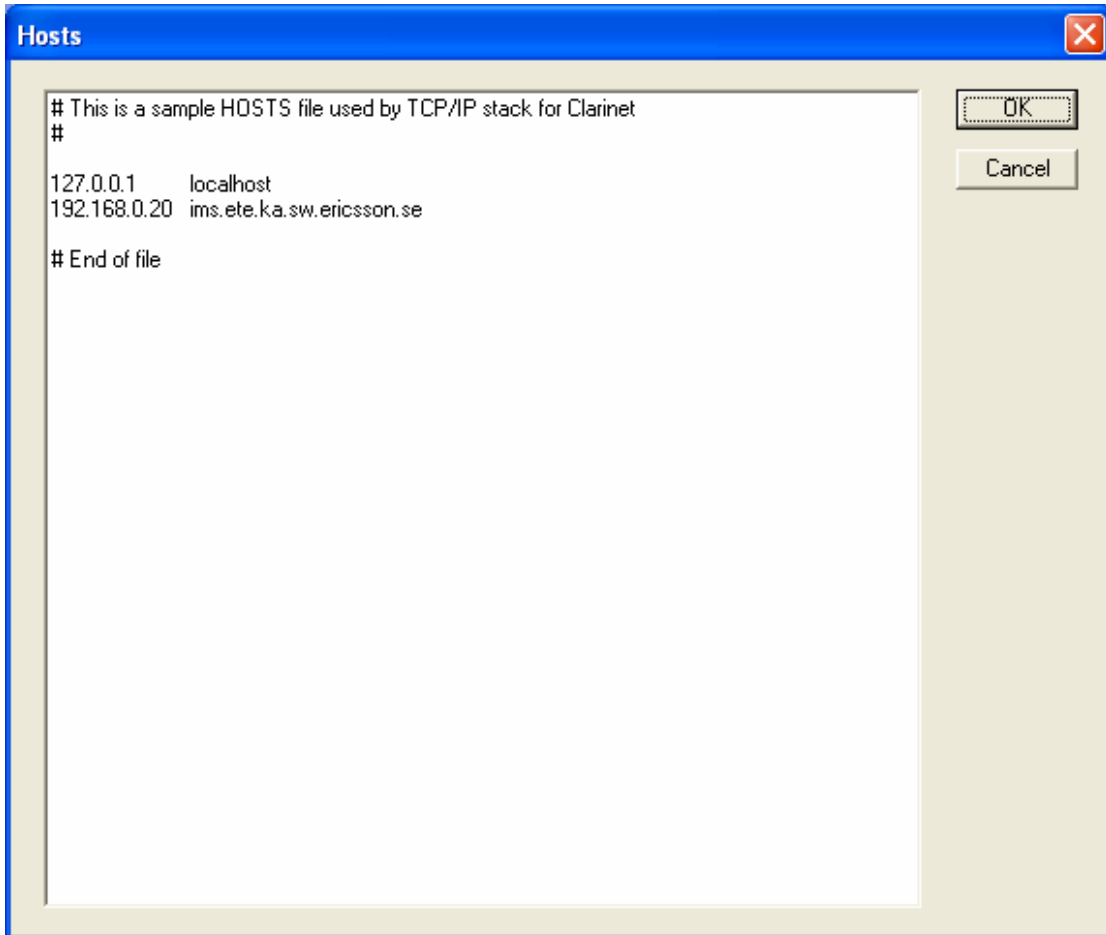


Select "No parser" option if you want to send the message "as it is"
 Alternatively you can also choose to parse the message, but to keep some headers unchanged for testing purpose: in this case, unselect "No parser", and fill the AutoUpdate panel.

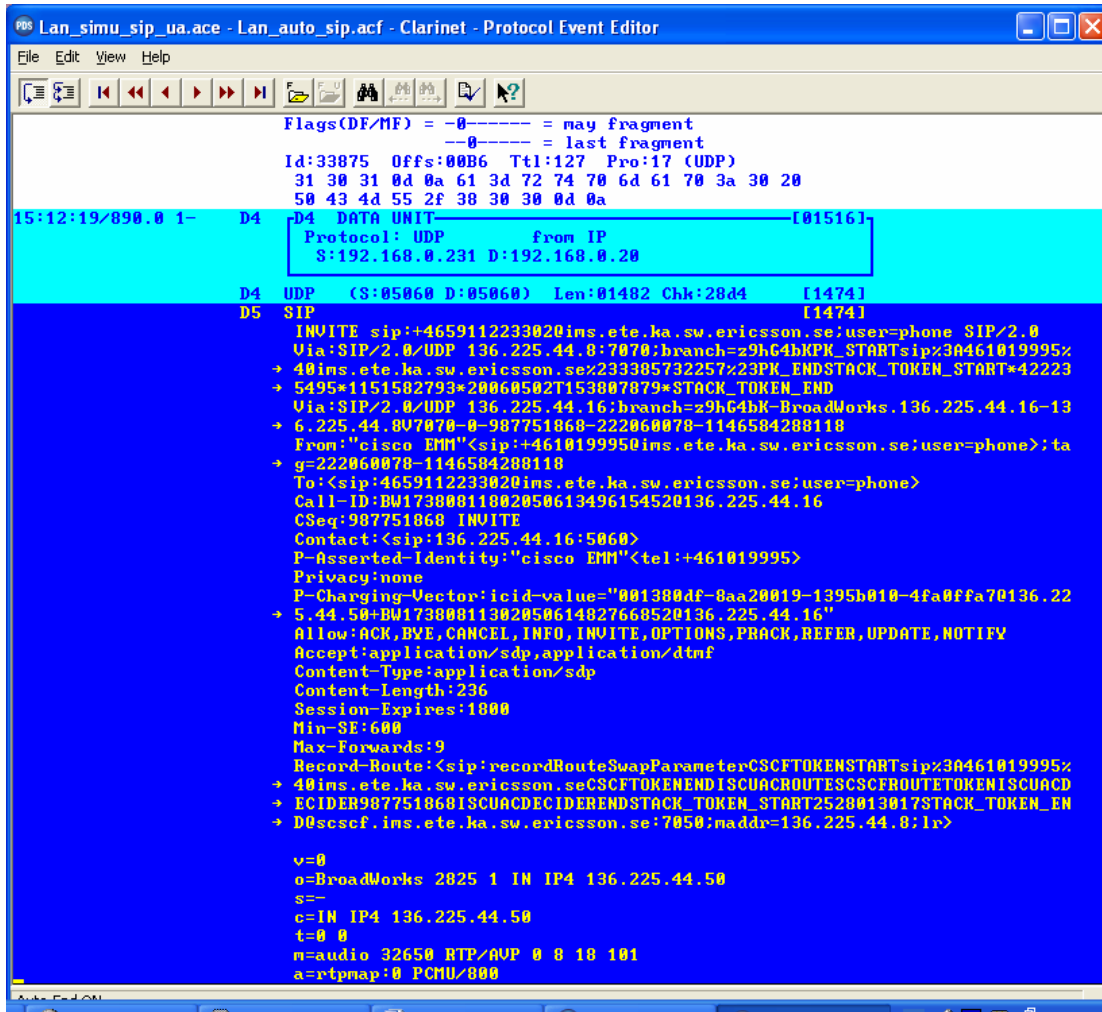
Note:

- the call will not reach an active state if AutoUpdate of some fields is not allowed, or if the "no parser" option is selected, but you will be able to check the reaction of the equipment when receiving the message
- if you do not select "no parser", the message will be parsed by default on exit (and modified)

- 3) Assume that the destination address can be resolved by the emulator.
As it is "ims.ete.ka.sw.ericsson.se" in this example, there are different cases:
- if the DNS servers can resolve the name, it's ok
 - Alternatively you can statically associate the IP address of equipment under test, via the panel "Initialize emulators->TCP/IP->Hosts"



3) The result of exec will be:



```

Flags(DF/MF) = -0----- = may fragment
              --0----- = last fragment
Id:33875  Offs:00B6  Ttl:127  Pro:17 (UDP)
 31 30 31 0d 0a 61 3d 72 74 70 6d 61 70 3a 30 20
 50 43 4d 55 2f 38 30 30 0d 0a

15:12:19/890.0 1-  D4  D4 DATA UNIT [01516]
                  Protocol: UDP      from IP
                  S:192.168.0.231 D:192.168.0.20

D4  UDP (S:05060 D:05060) Len:01482 Chk:28d4 [1474]
D5  SIP [1474]
  INVITE sip:+465911223302@ims.ete.ka.sw.ericsson.se;user=phone SIP/2.0
  Via:SIP/2.0/UDP 136.225.44.8:7070;branch=z9hG4bKPK_STARTsip%3A461019995%
  → 40ims.ete.ka.sw.ericsson.se%233305732257%23PK_ENDSTACK_TOKEN_START*42223
  → 5495*1151502793*20060502T153807879*STACK_TOKEN_END
  Via:SIP/2.0/UDP 136.225.44.16;branch=z9hG4bK-BroadWorks.136.225.44.16-13
  → 6.225.44.807070-0-987751868-222060078-1146584288118
  From:"cisco EMM"<sip:+461019995@ims.ete.ka.sw.ericsson.se;user=phone>; ta
  → q=222060078-1146584288118
  To:<sip:465911223302@ims.ete.ka.sw.ericsson.se;user=phone>
  Call-ID:BW17380811302050614827668520136.225.44.16
  CSeq:987751868 INVITE
  Contact:<sip:136.225.44.16:5060>
  P-Asserted-Identity:"cisco EMM"<tel:+461019995>
  Privacy:none
  P-Charging-Vector:icid-value="001380df-8aa20019-1395b010-4fa0ffa70136.22
  → 5.44.50+BW17380811302050614827668520136.225.44.16"
  Allow:ACK,BYE,CANCEL,INFO,INVITE,OPTIONS,PRACK,REFER,UPDATE,NOTIFY
  Accept:application/sdp,application/dtmf
  Content-Type:application/sdp
  Content-Length:236
  Session-Expires:1800
  Min-SE:600
  Max-Forwards:9
  Record-Route:<sip:recordRouteSwapParameterCSCFTOKENSTARTsip%3A461019995%
  → 40ims.ete.ka.sw.ericsson.seCSCFTOKENENDISCUACROUTESCSCFROUTETOKENISCUACD
  → ECIDER987751868ISCUACDECIDERENDSTACK_TOKEN_START2528013017STACK_TOKEN_EN
  → D0scscf.ims.ete.ka.sw.ericsson.se:7050;maddr=136.225.44.8;lr>

v=0
o=BroadWorks 2825 1 IN IP4 136.225.44.50
s=-
c=IN IP4 136.225.44.50
t=0 0
m=audio 32650 RTP/AVP 0 8 18 101
a=rtpmap:0 PCMU/8000
  
```

Note that:

- 1- this message is rather big, and pay attention that the max frame size in panel "Emulator Init->MAC->Max frame size" should be set to 1498. The default value in most profiles is invalid (1480) !
- 2 - lines in host definition panel are crlf terminated