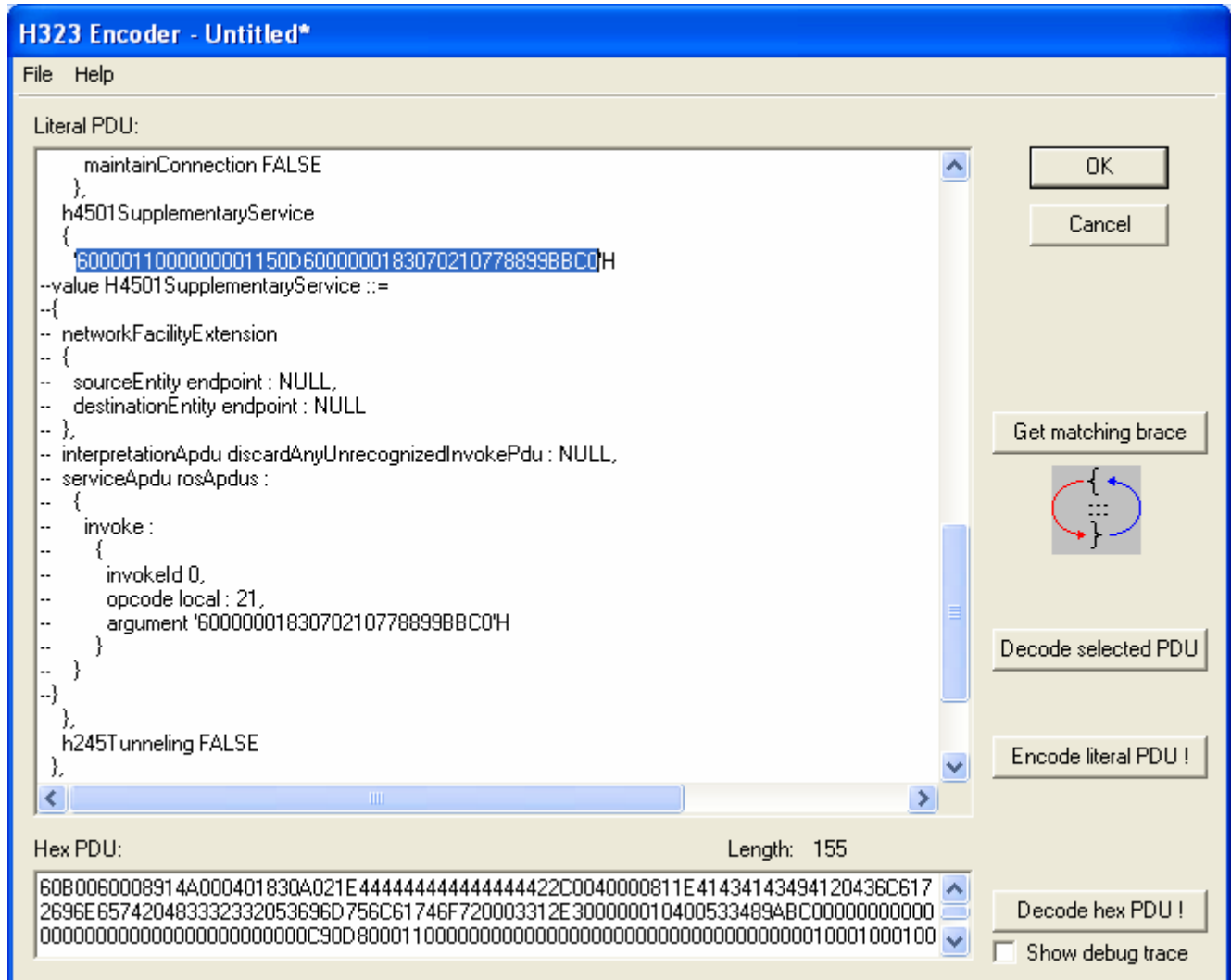
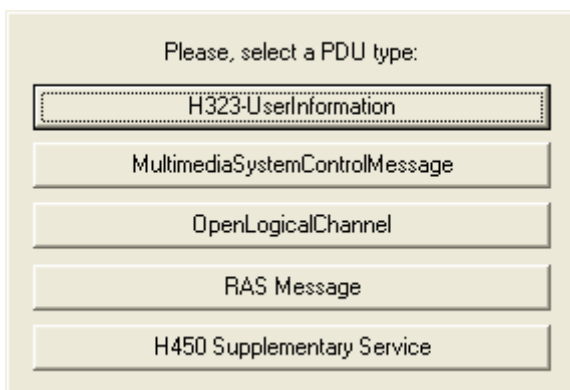


2. Decode H4501SupplementaryService

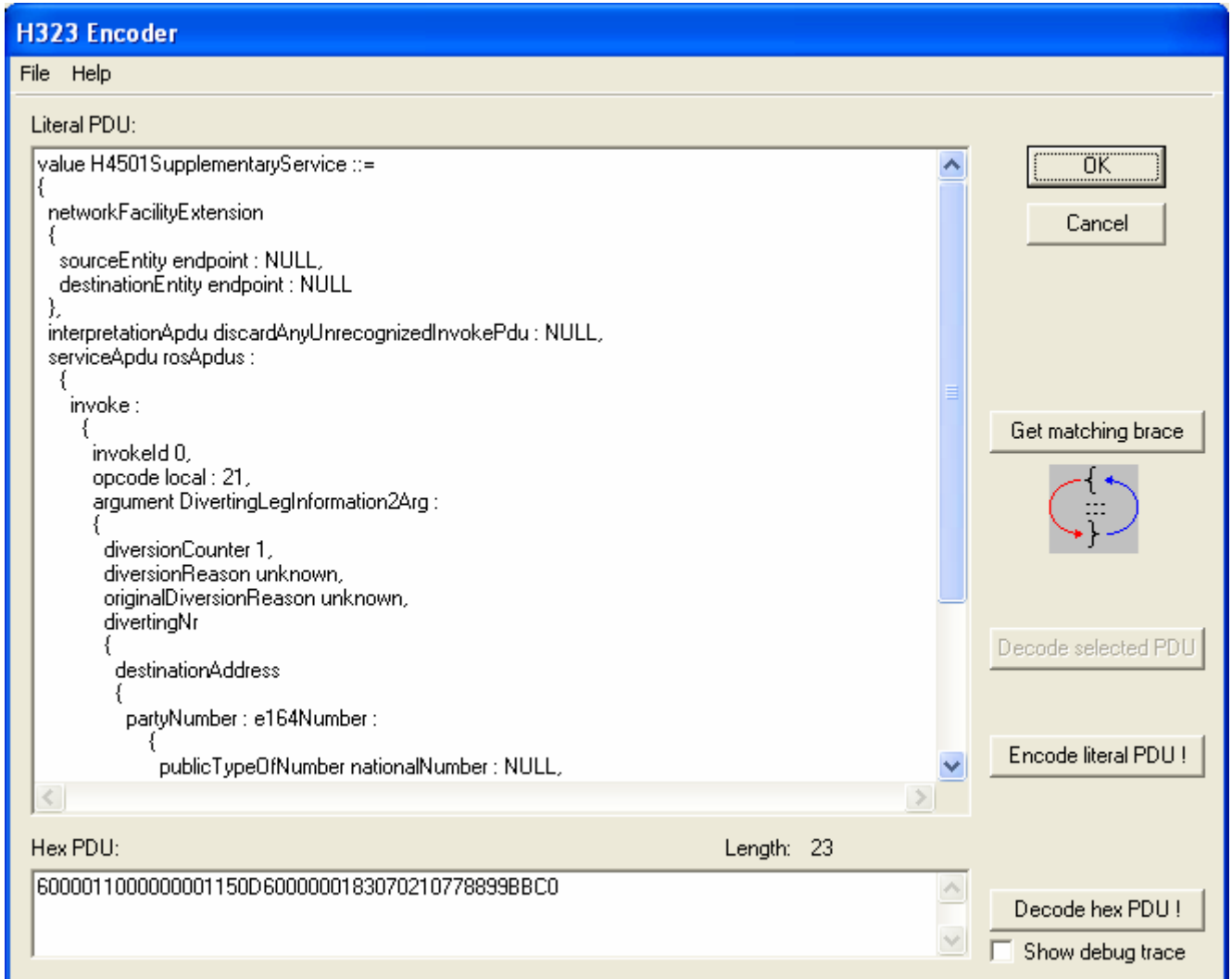
Select the H4501SupplementaryService value, and click the “Decode Selected PDU” button.



Select H450 Supplementary Service:



The Supplementary Service is displayed using ASN.1 Value Notation:



H323 Encoder

File Help

Literal PDU:

```
value H4501SupplementaryService ::=
{
  networkFacilityExtension
  {
    sourceEntity endpoint : NULL,
    destinationEntity endpoint : NULL
  },
  interpretationApdu discardAnyUnrecognizedInvokePdu : NULL,
  serviceApdu rosApdus :
  {
    invoke :
    {
      invokeId 0,
      opcode local : 21,
      argument DivertingLegInformation2Arg :
      {
        diversionCounter 1,
        diversionReason unknown,
        originalDiversionReason unknown,
        divertingNr
        {
          destinationAddress
          {
            partyNumber : e164Number :
            {
              publicTypeOfNumber nationalNumber : NULL,

```

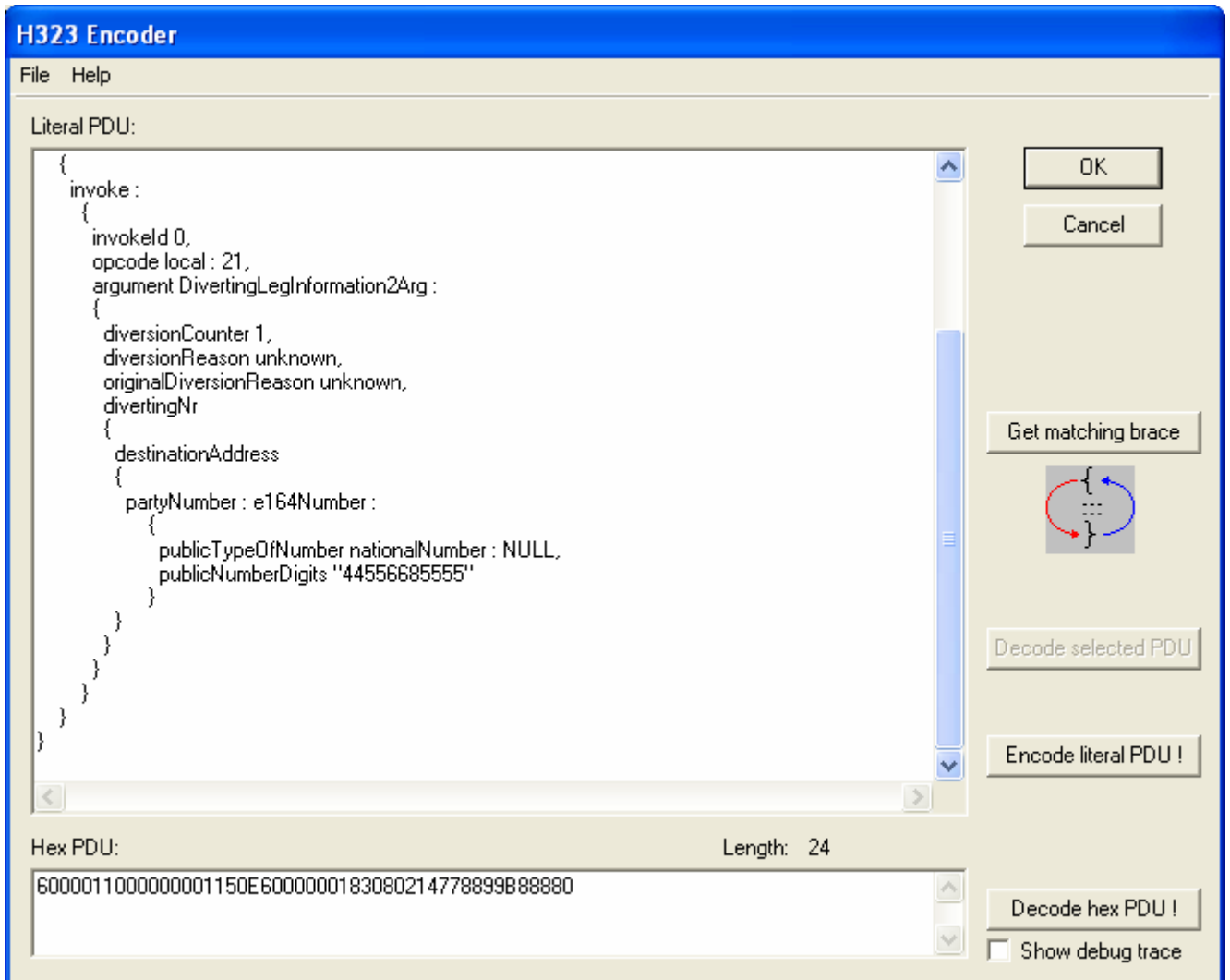
Hex PDU: Length: 23

```
6000011000000001150D60000001830702107788998BBC0
```

Buttons: OK, Cancel, Get matching brace, Decode selected PDU, Encode literal PDU!, Decode hex PDU!, Show debug trace

3. Edit the Supplementary Service

Edit the Supplementary Service destination address, and click the “Encode Literal PDU” button:



Click OK to Exit and to update the User-User IE.